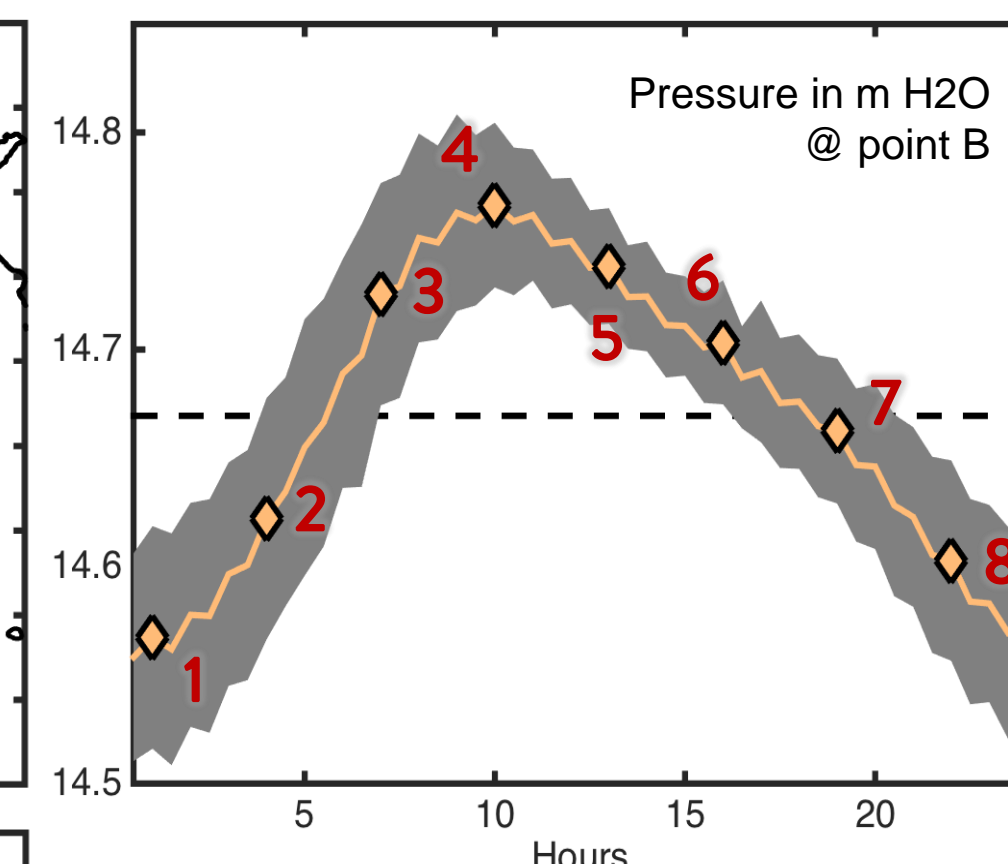
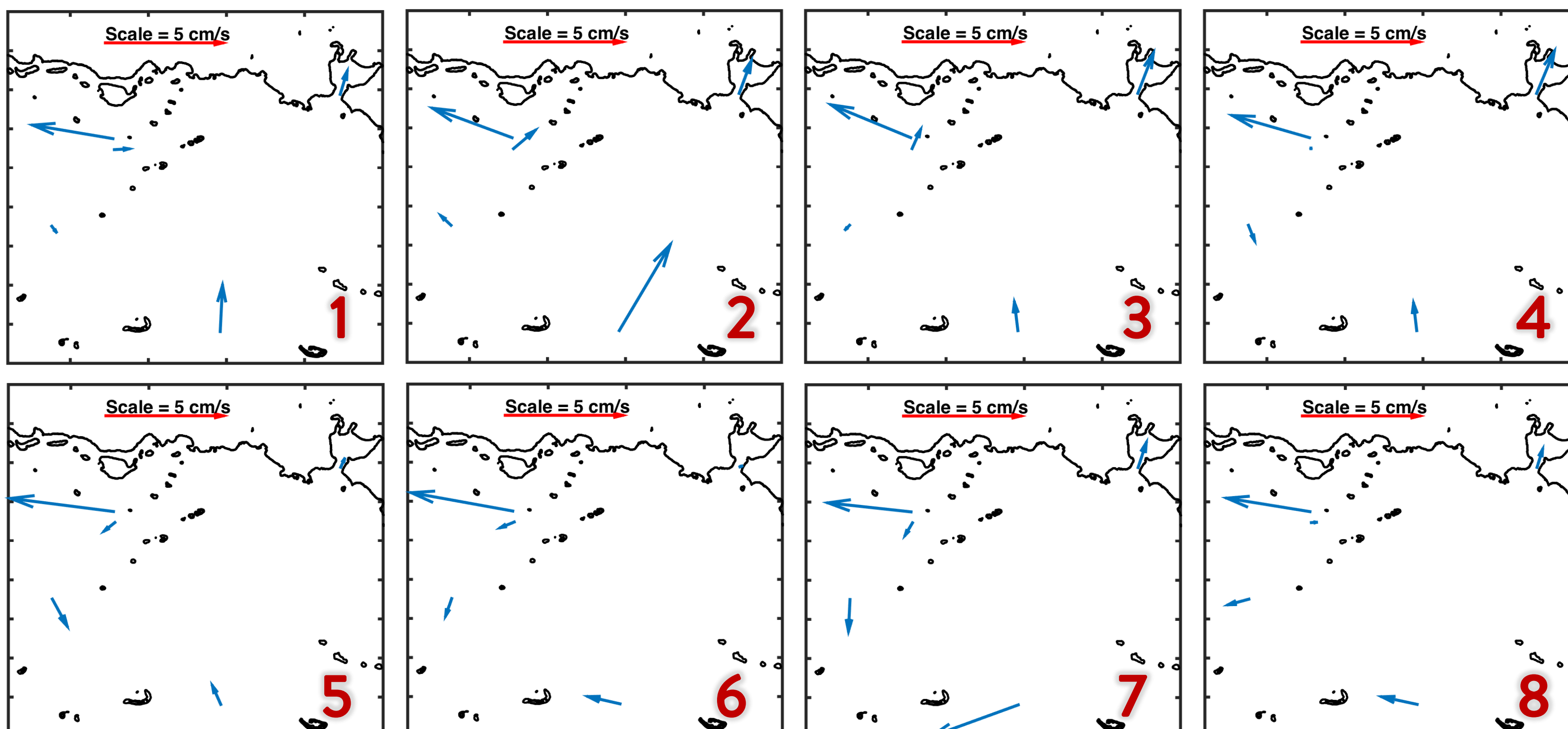
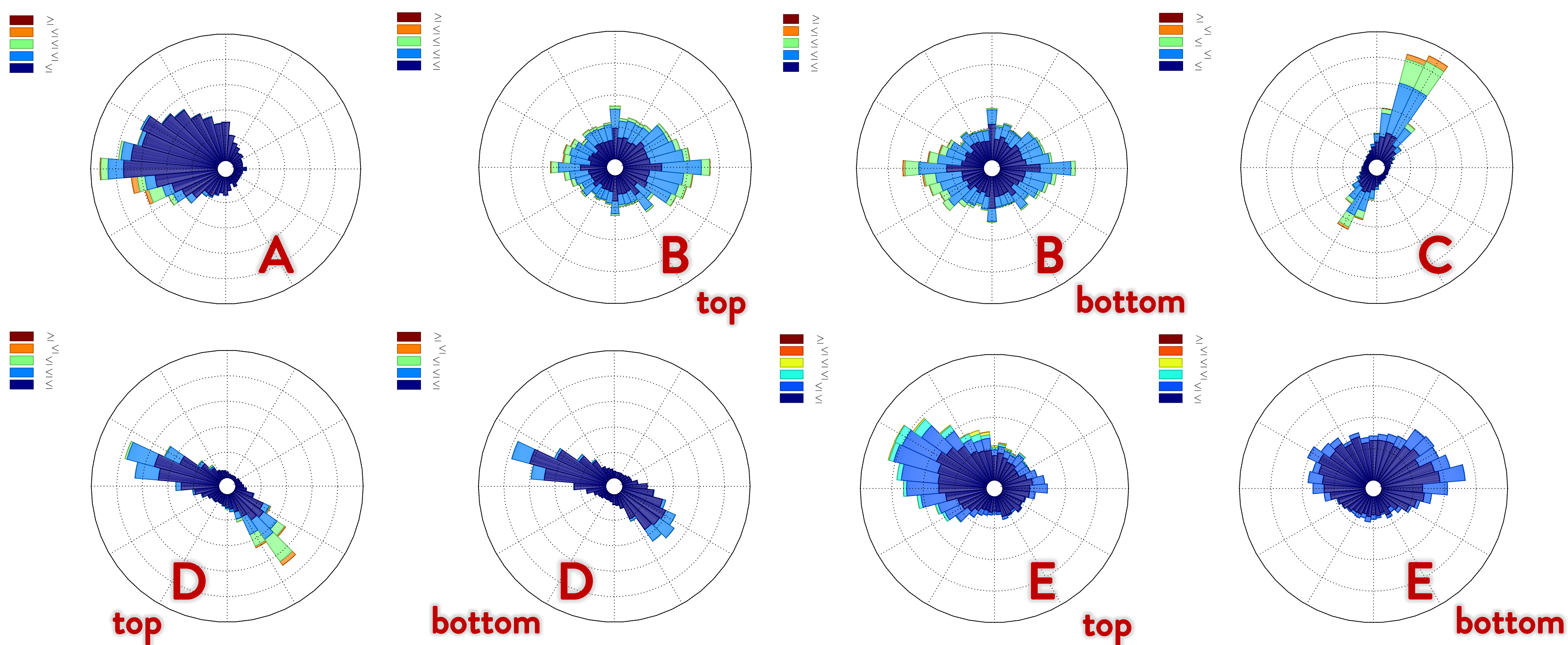
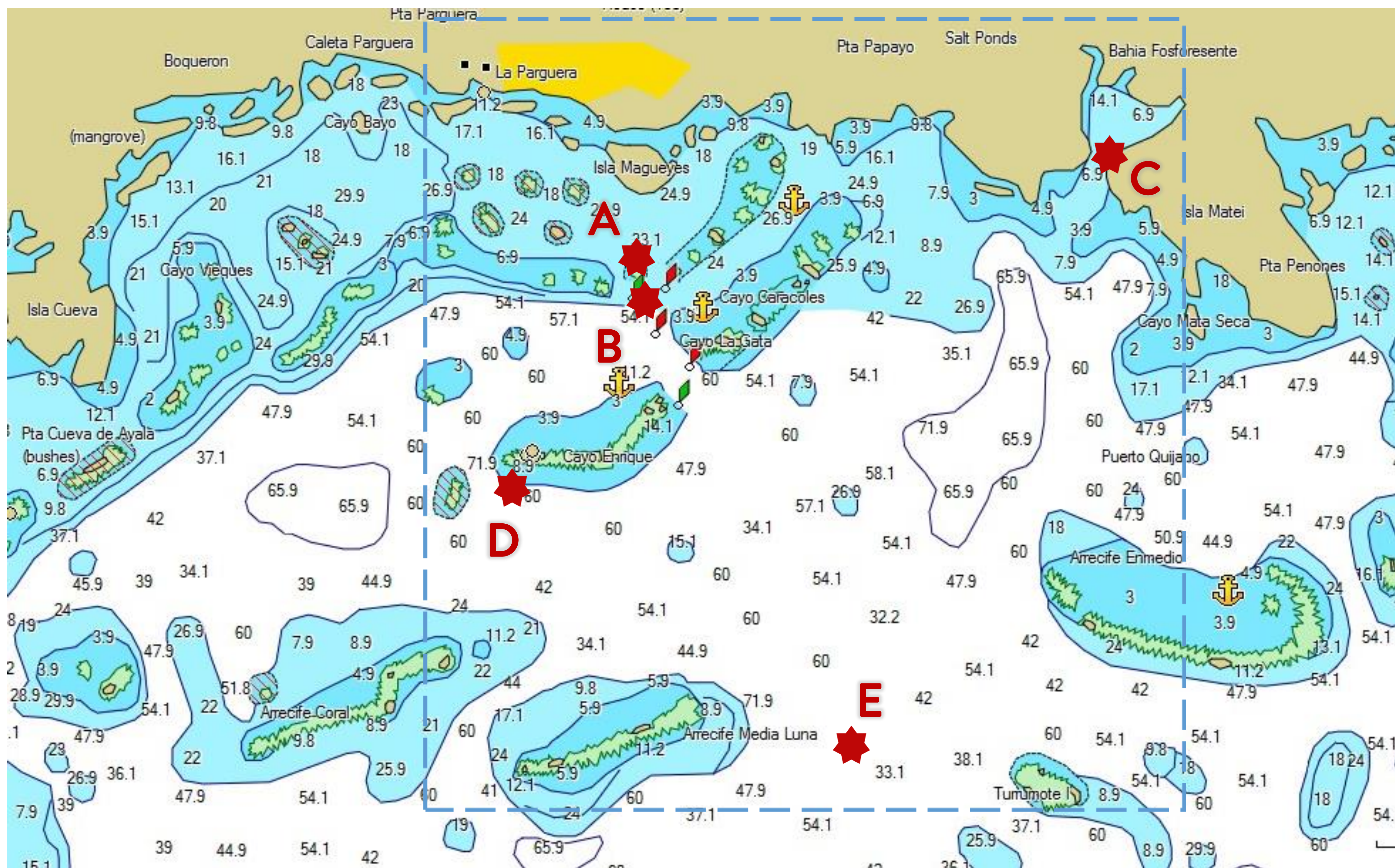


# Mean Currents at La Parguera Marine Reserve: A Case Study during November 2016

Sylvia Rodríguez-Abudo



**ACKNOWLEDGEMENTS:** This work is part of the hydrodynamic component of Sea Grant project "Natural Coastal Barriers at Risk: A First Assessment of Biogeochemical and Physical Stressors", with PIs J. Salisbury and M. Melendez from UNH. The author appreciates all the help from CARICOOS staff and students during the field deployment.

